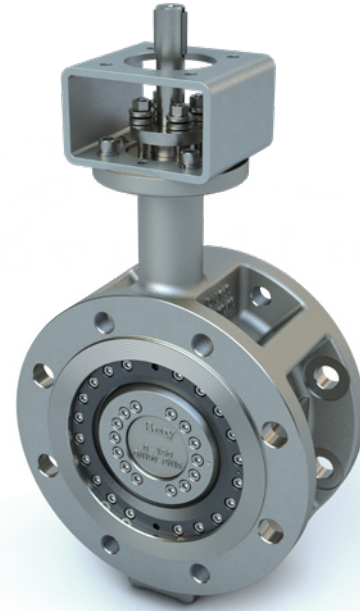


OVERVIEW

Tri Lok® is the premier isolation valve for operation in light vacuum to high-pressure applications. The non-rubbing, metal-to-metal seal delivers zero-leakage bidirectional shutoff with minimal torque, and is certified fire-safe. Compared to gate, globe, or ball valves of the same size and pressure class, Tri Lok® provides space and weight savings, while minimizing installation and maintenance costs.

APPLICATIONS

- > Bulk Liquid Storage
- > Carbon Black Processing
- > Chemical Processing
- > Geothermal Steam
- > LNG/Liquefaction
- > Power Generation
- > Pulp and Paper Liquor
- > Refining (Downstream)
- > Shipbuilding
- > Steam Distribution
- > Sugar and Ethanol
- > Upstream Oil and Gas
- > Water & Wastewater



SPECIFICATIONS

Size Range¹	DN 80 to 400
Temperature Range²	-60°C to 450°C
Pressure Rating	PN 10, PN 25, PN 40
Body Style	Lug Double Flanged
Tightness Test	Bidirectional Zero Leakage EN 12266 Rate A

NOTES

- 1 Larger sizes available upon request.
2 Higher temperatures available upon request.

DESIGN STANDARDS

Valve Design	EN 12516-1 EN 12569 EN 593 NE 167
Material Standard	EN 16668 AD2000 W0
Marking	EN 19 DIN EN IEC 61406 DIN 91406
Top Flange	ISO 5211
Flange Drilling	EN 1092-1
Face-to-Face	EN 558
Testing Standard	EN 12266-1 & 2

MATERIAL OPTIONS¹

Body	Carbon Steel Stainless Steel
Disc	Carbon Steel Stainless Steel
Seat	Stainless Steel (Hardened)
Seal Ring (Laminated)	Duplex Stainless Steel/Graphite
Seal Ring (Solid Seal)	Duplex Stainless Steel
Stem	410 Stainless Steel XM-19 (Nitronic® 50)

NOTE:

- 1 Other materials available upon request.

CERTIFICATIONS AND APPROVALS

Declaration of Conformity	CE UKCA
Pressure Equipment Directive	2014/68/EU PE(S)R
Machinery Directive	2006/42/EC
Fire-Safe	API 607
Atmospheric Explosion¹	ATEX (2014/34/EU)
Fugitive Emissions	ISO 15848-1 TA-Luft VDI 2440
AutoID / ID Link	DIN 91406 / IEC 61406
Safety Integrity Level	IEC 61508 Level 3 (SIL 3 capable)

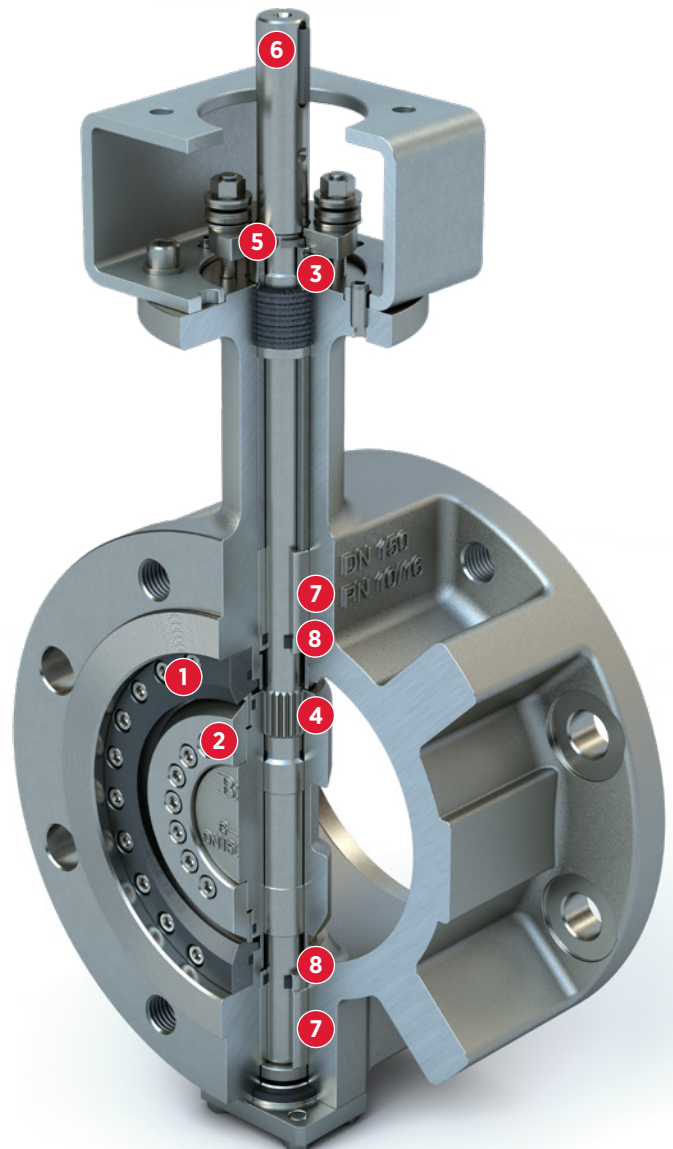
NOTE:

- 1 Pending.

FEATURES & BENEFITS

The Tri Lok®-Cx features a fully adjustable, field-replaceable seat and seal system to extend overall service life, minimize downtime and reduce the need for costly off-site repairs or total replacement.

- 1 SEAT:** The hardened seat, reduces the risk of galling, offering superior performance and durability.
- 2 SEAL RING:** Offers a flexible design and wide range of materials to provide torque-loaded sealing with zero-leakage.
- 3 STEM PACKING:** Fully-adjustable, field-replaceable stem seal system is certified to international fugitive emission standards.
- 4 SPLINED CONNECTION:** Strong reliable connection allows for axial movement, prevents typical misalignment, minimizes hysteresis and eliminates external connections
- 5 BLOWOUT-PROOF STEM:** The one-piece stem features a blow-out prevention ring located above the packing box, outside the pressure boundary.
- 6 INDEXED STEM:** Provides positive visual indication of disc/seal ring position after installation.
- 7 STEM BEARINGS:** Elongated hardened stem bearings provide maximum stem support.
- 8 BEARING SEALS:** Standard bearing seals that minimize ingress of media into the journal.



Visit [BRAY.COM](https://www.bray.com) for additional product information and downloads.

